

**PKC beta 1 Antibody**  
**Rabbit mAb**  
**Catalog # AP91529****Specification**

---

**PKC beta 1 Antibody - Product Information**

Application	WB, IHC, FC, ICC
Primary Accession	<a href="#">P05771</a>
Reactivity	Rat
Clonality	Monoclonal
<b>Other Names</b>	
protein kinase C beta type□PRKCB□Prkcb□PKC-B; PKC-beta□PRKCB1□PKC Beta-I□EC:2.7.11.13	
Isotype	Rabbit IgG
Host	Rabbit
Calculated MW	76869 Da

**PKC beta 1 Antibody - Additional Information**

Dilution	WB~~1:1000 IHC~~1:100~500 FC~~1:10~50 ICC~~N/A
Purification	Affinity-chromatography
Immunogen	A synthesized peptide derived from human PKC beta 1
Description	Plays a key role in B-cell activation and function by regulating BCR-induced NF-kappa-B activation and B-cell survival.
Storage Condition and Buffer	Rabbit IgG in phosphate buffered saline , pH 7.4, 150mM NaCl, 0.02% sodium azide and 50% glycerol. Store at +4°C short term. Store at -20°C long term. Avoid freeze / thaw cycle.

**PKC beta 1 Antibody - Protein Information****Name** PRKCB**Synonyms** PKCB, PRKCB1**Function**

Calcium-activated, phospholipid- and diacylglycerol (DAG)- dependent serine/threonine-protein kinase involved in various cellular processes such as regulation of the B-cell receptor (BCR) signalosome, oxidative stress-induced apoptosis, androgen receptor-dependent transcription regulation, insulin signaling and endothelial cells proliferation. Plays a key role in B-cell activation by regulating BCR- induced NF-kappa-B activation. Mediates the activation of the canonical NF-kappa-B pathway (NFKB1) by direct phosphorylation of CARD11/CARMA1 at 'Ser-559', 'Ser-644' and 'Ser-652'. Phosphorylation induces CARD11/CARMA1 association with lipid rafts and

recruitment of the BCL10-MALT1 complex as well as MAP3K7/TAK1, which then activates IKK complex, resulting in nuclear translocation and activation of NFKB1. Plays a direct role in the negative feedback regulation of the BCR signaling, by down-modulating BTK function via direct phosphorylation of BTK at 'Ser-180', which results in the alteration of BTK plasma membrane localization and in turn inhibition of BTK activity (PubMed:<a href="http://www.uniprot.org/citations/11598012" target="\_blank">11598012</a>). Involved in apoptosis following oxidative damage: in case of oxidative conditions, specifically phosphorylates 'Ser-36' of isoform p66Shc of SHC1, leading to mitochondrial accumulation of p66Shc, where p66Shc acts as a reactive oxygen species producer. Acts as a coactivator of androgen receptor (AR)-dependent transcription, by being recruited to AR target genes and specifically mediating phosphorylation of 'Thr-6' of histone H3 (H3T6ph), a specific tag for epigenetic transcriptional activation that prevents demethylation of histone H3 'Lys-4' (H3K4me) by LSD1/KDM1A (PubMed:<a href="http://www.uniprot.org/citations/20228790" target="\_blank">20228790</a>). In insulin signaling, may function downstream of IRS1 in muscle cells and mediate insulin-dependent DNA synthesis through the RAF1-MAPK/ERK signaling cascade. Participates in the regulation of glucose transport in adipocytes by negatively modulating the insulin-stimulated translocation of the glucose transporter SLC2A4/GLUT4. Phosphorylates SLC2A1/GLUT1, promoting glucose uptake by SLC2A1/GLUT1 (PubMed:<a href="http://www.uniprot.org/citations/25982116" target="\_blank">25982116</a>). Under high glucose in pancreatic beta-cells, is probably involved in the inhibition of the insulin gene transcription, via regulation of MYC expression. In endothelial cells, activation of PRKCB induces increased phosphorylation of RB1, increased VEGFA-induced cell proliferation, and inhibits PI3K/AKT-dependent nitric oxide synthase (NOS3/eNOS) regulation by insulin, which causes endothelial dysfunction. Also involved in triglyceride homeostasis (By similarity). Phosphorylates ATF2 which promotes cooperation between ATF2 and JUN, activating transcription (PubMed:<a href="http://www.uniprot.org/citations/19176525" target="\_blank">19176525</a>). Phosphorylates KLHL3 in response to angiotensin II signaling, decreasing the interaction between KLHL3 and WNK4 (PubMed:<a href="http://www.uniprot.org/citations/25313067" target="\_blank">25313067</a>). Phosphorylates and activates LRRK1, which phosphorylates RAB proteins involved in intracellular trafficking (PubMed:<a href="http://www.uniprot.org/citations/36040231" target="\_blank">36040231</a>).

#### **Cellular Location**

Cytoplasm. Nucleus. Membrane; Peripheral membrane protein

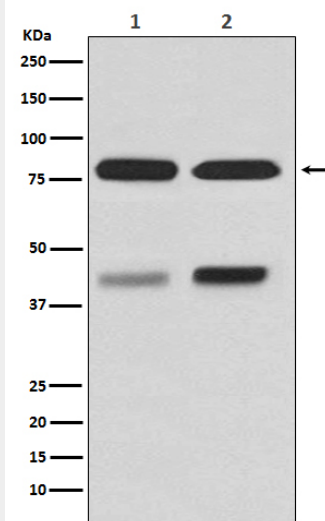
#### **PKC beta 1 Antibody - Protocols**

Provided below are standard protocols that you may find useful for product applications.

- [Western Blot](#)
- [Blocking Peptides](#)
- [Dot Blot](#)
- [Immunohistochemistry](#)
- [Immunofluorescence](#)
- [Immunoprecipitation](#)
- [Flow Cytometry](#)
- [Cell Culture](#)

#### **PKC beta 1 Antibody - Images**





Western blot analysis of PKC beta 1 expression in (1) HeLa cell lysate; (2) NIH/3T3 cell lysate.